

Illuminate

Supporting the Jewish Museum
into a New Era





Jewish Museum of Australia: Gandel Centre of Judaica

26 Alma Road
St Kilda VIC 3182
jewishmuseum.com.au
ABN 21 005 574 210

The Jewish Museum of Australia stands on the traditional land of the Yaluk-ut Weelam Clan of the Boon Wurrung people of the Kulin Nation. We acknowledge and respect the cultural heritage of this land, and offer our respects to their Elders—past, present and future.

03	Welcome
06	Who We Are & What We Do
11	What We Stand For
	Our Pillars
15	Research & Interpretation
19	Learning & Engagement
23	Experiences & Events
	Our Impact
27	Facts & Figures
29	Four Key Platforms
	Illuminate
33	Supporting the Jewish Museum into a New Era
37	Ways to Give and Be Involved
40	Find Out More



Welcome

Out of our beautifully refreshed spaces, we are thrilled to welcome you to a new era at the Jewish Museum of Australia: Gandel Centre of Judaica—to reconnect, be inspired, feel excited and engaged.

At the Jewish Museum, we illuminate Jewish life. Across our pillars of focus—research & interpretation, learning & engagement, experiences & events—we are privileged to share the many voices of our diverse and dynamic community, showcasing Jewish excellence and everydayness to visitors of all ages and backgrounds.

From the youngest in our school groups to the young-at-heart, the transformative power of storytelling and discovery has never been clearer. For after the distance and dislocation wrought by the pandemic, we're ever more confident in the impact of our encounters to open minds and hearts.

With your help, we can do so much more. We're gearing up with a bold curatorial and programming agenda that cements our place as a world-class contemporary museum at the intersection of art and Jewish culture.

We hope for a world of freedoms and tolerance, where our Jewish Museum enables the space and courage to be curious, compassionate and creative.

Please join us on this journey to keep us shining bright.



Gideon Kline
Board President



Noè Harsel
Museum Director & CEO

“Spearheaded by the Jewish Museum of Australia, Museums Together represents an opportunity for students to learn about difference as well as how to live with people from diverse backgrounds, which in this country is so important.”

Dr Sadik Kirazli
Religion & Values Educator, Sirius College



Who We Are & What We Do

At the Jewish Museum of Australia, we illuminate Jewish life.

At the intersection of art and Jewish culture, our museum is a place for all people to share in the Australian Jewish experience. For almost 45 years, the Jewish Museum has celebrated a truly global people through an Australian prism with curiosity and connection at our heart.

We create world-class exhibitions, programs and events, and design experiences, that explore the many voices of our diverse community and showcase Jewish excellence and everydayness. Devising entry points that are compelling for Jewish and non-Jewish audiences of all ages and backgrounds, we animate and activate storytelling across our four key platforms—onsite, online, offsite and via outreach—ensuring always that our offer is interactive, inclusive and audience-centered.

In a time of growing intolerance and rising anti-Semitism, our museum provides a reason to come together, share ideas and exchange perspectives. Today, we're helping communities heal and reconnect post-pandemic, leveraging the Jewish Museum's agency as a place of learning, creativity and multi-generational milestone experiences.

In the medium to long term, our plans include a once in a generation move to Melbourne's Jewish Arts Quarter (JAQ), co-located with peer organisations in a state-of-the-art new building. With this exciting development in our sights, we're gearing up with an ambitious programming agenda that lays the groundwork for immediate and spectacular impact from day one at our relocated address. And from now, a bold and bright enunciation of the Jewish Museum for a new era.

Board of Directors

Gideon Kline
President

Ari Bergman

Aviva Carnell

Barry Fradkin OAM

Simon Goodrich

Esther Gyorki

Adam Krongold

Naava Lederman

Ben Margow

Carmella Prideaux

Zelda Rosenbaum OAM

Grace Slonim

Lindy Susskind

Frank Tisher OAM

Board of Governors

John Gandel AC
Chair

Jeanne Pratt AC

Zelda Rosenbaum OAM

Patrons

John Gandel AC and Pauline
Gandel AC

Lead Benefactors

Dr Helen Light
Inaugural Director

Zelda Rosenbaum OAM

Honorary Life President

Leadership

Noè Harsel
Museum Director & CEO

Lisa Klepfisz

Head of Experience & Facilities

Shelley Krape

Head of Brand & Partnerships

Naomi Ryan & Theresa Powles

*Head of Learning &
Engagement*

Mark Themann

*Head of Collection &
Interpretation*

“The Jewish Museum provides a vibrant bridge to Judaism for the community. It links Jews to their heritage in fresh and engaging ways through boldly imagined exhibitions that never fail to excite and surprise.

The Museum is also a key bridge to the wider community where it plays a crucial role in breaking down barriers and educating the public against racism.”

Finkel Foundation



mirka ©

14 February - 19 December
Immerse yourself in her colourful world

JEWISH MUSEUM of AUSTRALIA
Candell Centre of Judaism

jewishmuseum.com.au

© 2018 Mirka Shalev. All Rights Reserved. Photo: [unreadable]



mi

14 February - 19 December
Immerse yourself in

JEWISH MUSEUM of AUSTRALIA
Candell Centre of Judaism

jewishmuseum.com.au

© 2018 Mirka Shalev. All Rights Reserved. Photo: [unreadable]



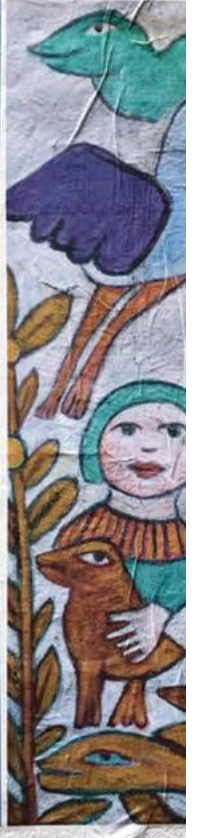
mirka ©

14 February - 19 December
Immerse yourself in her colourful world

JEWISH MUSEUM of AUSTRALIA
Candell Centre of Judaism

jewishmuseum.com.au

© 2018 Mirka Shalev. All Rights Reserved. Photo: [unreadable]





What We Stand For

The Jewish Museum sits at the intersection of art and Jewish culture, as a place for all people to share in the Australian Jewish experience. We maintain a key focus on marginalised and disadvantaged communities, ensuring that lesser-heard voices are preferenced and promoted.

We illuminate Jewish life.

To illuminate is to:

- Supply with light;
- Make luminous or shining;
- Enlighten intellectually or spiritually;
- Make clear;
- Bring to the fore; and
- Make illustrious or resplendent.

Our values are:

- Authenticity A commitment to excellence, heritage and quality;
- Inclusivity Building a sense of belonging and trust with people of all backgrounds;
- Innovation A museum experience re-imagined beyond our community and country; and
- Openness Sparking curiosity, conversation and social cohesion through connection and play.

Our guiding Jewish values are:

- Chesed Compassion and kindness; and
- Tikkun Olam The desire to improve our world.

Our brand identity is proudly and purposefully the menorah—conjuring light and life; tradition and tomorrow; family, community and continuity; and hope.

“The Besen Family Foundation is delighted to support the significant and innovative work of the Jewish Museum of Australia. The Foundation is proud to be associated with the Jewish Museum of Australia, an institution that is recognised nationally for its inspiring exhibitions, education programs and museum collection management.”

Tabitha Lovett
CEO, Besen Family Foundation



ACADEMIC DEBATE

...draw on various precedents in the Talmud and bring forward different arguments. ...does indeed draw ...the questioners ...own conclusions ...literature. ...the assistance of Rabbi R. Lubofsky, ...bert Joseph and ...enbaum.

Portion
2. You're or Mine?
Please press buttons to start.



HELMUT
NEWTON

IN
FOCUS

29 A
29 J

Our Pillars

Research & Interpretation

With over 20,000 items of historical and contemporary significance – including ritual Judaica, fine art, photography, textiles, letters, diaries, documents, books, everyday objects and more—the Jewish Museum

is home to the world’s largest repository of the Australian Jewish experience.

Our collection is a storehouse of memories, preserved in perpetuity and regularly presented for the enjoyment of audiences, both physical and virtual. Through our permanent galleries, special exhibitions and collection showcases, we share the myriad experiences of being Jewish and Australian. Exploring concepts such as identity, belonging and belief, we spotlight iconic and mainstream stories—inspiring delight, curiosity and introspection through our rigorous but

generous
and dynamic lens.

Each year, our multidisciplinary team conceives, curates and crafts a flagship exhibition—an immersive journey that illuminates Jewish life and captivates the young and young-at-heart.

With your support we will:

- **Improve and upscale our collection housing, as well as increase public access to our storehouse of over 20,000 items;**
- **Expand our research to reflect the diversity of contemporary Jewish life and culture in Australia and internationally;**
- **Scope and produce an oral history archive that captures the myriad experiences of being Jewish and Australian and that showcases the profound contribution Jews have made nationally and across generations; and**
- **Stage annual major exhibitions that profile iconic artists, stories and themes with Australian Jewish significance and relevance.**

“The exhibition is a revelatory exploration of Mirka’s life and art, and the museum has been transformed into an immersive Mirka world... The exhibition also gives us a taste of a new era for the Jewish Museum—fresher and more contemporary, but still very much tied to the legacy of the organisation.”

Alana Kushnir
Broadsheet

“What a triumph! Mirka is dancing in the stars with joy in her heart.”

William Mora & Anna Mortley
The Estate of Mirka Mora and William Mora Galleries





Our Pillars

Learning & Engagement

At the Jewish Museum, we believe in the arc of lifelong learning—recognising every engagement with our visitors as a chance to open minds and hearts and imprint our hope for a community of compassion and tolerance.

Each year, tens of thousands of students from non-Jewish schools, both public and private, come to discover more about Jewish culture and the contribution Jews have made to shaping modern multicultural Australia. For many, it is their first encounter with Judaism.

Our professional development programs support the teaching of Jewish life and beliefs, particularly as part of comparative religious studies, and our seasonal short courses enable adult learners to discover more about themselves, their culture and world.

Jewish day school students meaningfully take part in activities including our enduringly popular Roots program, developed in collaboration with Bialik College, The King David School, Leibler Yavneh College and Mount Scopus College, and delivered in conjunction with the Australian Genealogical Society (Victoria).

Our Learning & Engagement team is also responsible for pioneering projects such as the Museums Together bridge-building program with the Islamic Museum of Australia, and most recently, the development of an augmented reality experience that accompanies and enlivens our Timeline of Jewish History Gallery.

With your support we will:

- **Refresh and make contemporary our in-situ gallery programs for primary and secondary students, and teachers;**
- **Conceive and develop learning interventions that use new technologies like augmented and virtual realities;**
- **Design and conduct outreach modules for disadvantaged, regional and hard-to-reach communities;**
- **Boost our adult learning and short course programming, enabling hybrid delivery onsite and online and partnerships with local and international thought-leaders and scholars; and**
- **Devise and deliver multi-generational and family engagement opportunities that mark and celebrate Jewish holy days, festivals and milestones.**

“Bringing the world of Jewish heritage and religion to thousands of people each year in Australia helps break down prejudices and build understanding among people through the richness and diversity of Jewish life and culture around the world.

It preserves our community’s multi-generational history, reflecting a unique heritage and cultural expression of the Australian Jewish community.

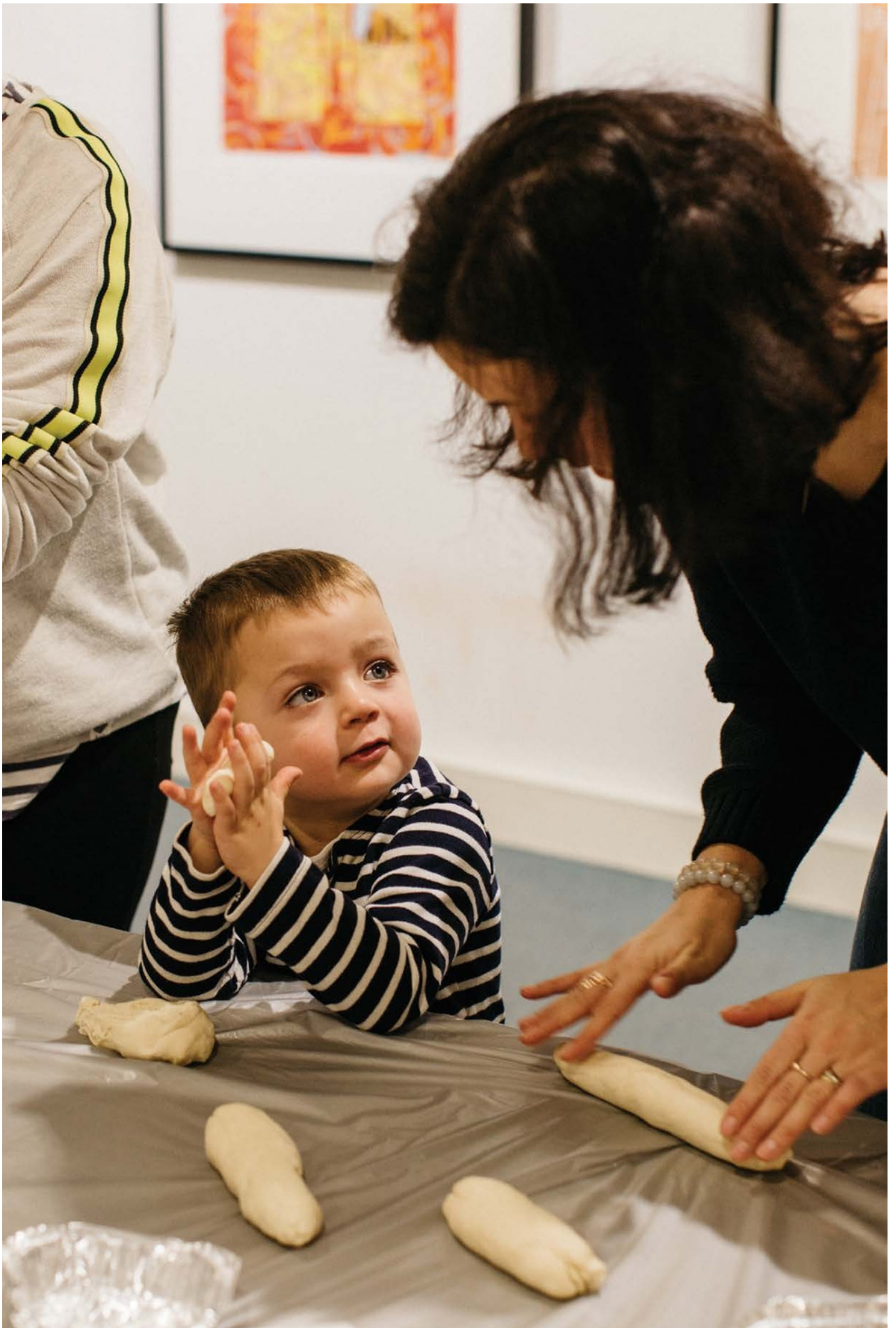
Pauline and I have been associated with the organization since its inception as it provides a distinctive and meaningful Jewish heritage. It is a very important part of our lives.

John Gandel AC
Lead Benefactor

itage and culture, art and
ch year, the Jewish Museum
judices and promotes greater
ugh the appreciation of the
fe and culture—in Australia and

erial heritage for future
istory and celebrating the
an Jewish identity.

d with the Museum since its
ve connection to our Jewish
rt of my life.”



Our Pillars

Experiences & Events

From launches, lectures and panel discussions, to creative workshops, film screenings, historic walks and musical performances, the Jewish Museum's programs bring people together and our collection and exhibitions to life—within and beyond our walls.

Taking our onsite work offsite and out in the wider community, our annual curated series of experiences and events also enables vibrant and dynamic partnerships with our community friends and arts/cultural counterparts such as the Festival of Jewish Arts and Music, Jewish International Film Festival, Melbourne Jewish Book Week, as well as Heide Museum of Modern Art, Museums Victoria, the National Gallery of Victoria, Melbourne Design Week, Melbourne Fashion Week and collaborative moments with our Multicultural Museums Victoria partners.

Many of these vibrant programs are supported by our dedicated and passionate volunteers. A band of 100+ storytellers, they add remarkable value through their lived experience and expert training, and rank among the Museum's proudest assets.

With your support we will:

- **Support the involvement and celebration of contemporary Australian and international Jewish artists, designers, writers, musicians, performers, thought-leaders and more;**
- **Commission unique activations, pop-ups and interventions across Melbourne that showcase Jewish voices, rituals and beliefs through contemporary visual art and design;**
- **Create and produce special moments for kids and families that explore what it means to be Jewish and Australian; and**
- **Strengthen meaningful and audience-centred partnerships with our Jewish community counterparts and arts/culture sector friends.**

“The exhibition was excellent. It gave an insight to Amy as a person rather than a superstar.”

Jewish Museum visitor
Amy Winehouse: A Family Portrait exhibition

“It was a beautiful tribute to Amy, who was such a talented and complex character. It was the main reason we travelled to Melbourne. Well worth the trip.”

Jewish Museum visitor
Amy Winehouse: A Family Portrait exhibition





The treatment of Jews in every country is the thermometer of that country's civilization.

ANTISEMITISM

A 19th-century term, antisemitism refers to a range of attitudes, prejudices and manifestations. Dating back thousands of years, Jewish persecution on religious, doctrinal, religious and cultural practices aroused hostility. With the rise of Christian violence...

In the enlightenment era of supposed rationality, it was no longer acceptable to express hatred based on religion and superstition. Pseudo-scientific theories were formulated, based on race, economics and nationalism - in truth the same old course of two millennia of Diaspora history, the need to confront the Jewish people - the 'other' - occurred in the heart of Europe in the 19th century.



Our Impact

Facts & Figures

Simply put, museums change lives. Numerous studies have found that access to cultural or creative activity impacts learning outcomes, social connection, physical health and mental wellbeing.

Museums have proven agency in:

- Building community, belonging and trust;
- Enhancing empathy and inclusion;
- Combating loneliness and isolation;
- Assisting individuals and communities to recover from disasters and trauma; and
- Making suburbs, cities and states more liveable.

The Jewish Museum has been presenting cultural and creative experiences for almost 45 years. Over that time, we have:

- Staged nearly 160 major exhibitions—including HELMUT NEWTON: In Focus (2022), MIRKA (2021), Amy Winehouse: A Family Portrait (2017), and Andy Warhol's Jewish Geniuses (2014), all to huge popular and critical acclaim, alongside community relevant exhibitions like Love & Legacy (2018), The Jews of Greece (2017), Can We Talk About Poland (2016), True Jews & Patriots: Australian Jews & WWI (2015);
- Presented over 1,300 events, including annual galas, business breakfasts, performances, launches, Q&As and talks by Jewish luminaries such as Her Excellency the Honourable Linda Dessau AC, Governor of Victoria, Victorian Ombudsman Deborah Glass OBE and the late Michael Gudinski AM;
- Welcomed more than 6,500 school groups;
- Provided professional development opportunities to nearly 12,000 teachers;
- Hosted over 450 short courses for 12,000 adult learners;
- Enjoyed the support of more than 1,000 volunteers;
- Partnered with 50+ cultural organisations in Australia and internationally; and
- When the global pandemic hit, the Jewish Museum dynamically continued programming—bringing much of our work online and expanding where and how we reached our community, in fact, broadening who that community became.



Our Impact

Four Key Platforms

The Jewish Museum is proud to deliver a truly multi-platform strategy, enabling our curated experiences and programs to meaningfully reach and engage with the widest possible audience.

Onsite

- Collection showcases
- Permanent gallery interventions
- Flagship special exhibitions
- Self-guided & guided tours
- Audio & new technology trails
- Primary & secondary schools programming
- Creative workshops, talks & performances

Offsite

- Commissioned activations & programming pop-ups
- Public art & street poster campaigns
- Guided walks
- Partnered events & experiences

Online

- 360-degree virtual gallery tours
- Collection & exhibition portals
- Learning tools
- Digital programming & subscriptions
- 24/7 Jewish Museum Shop
- E-magazine & podcast

Outreach

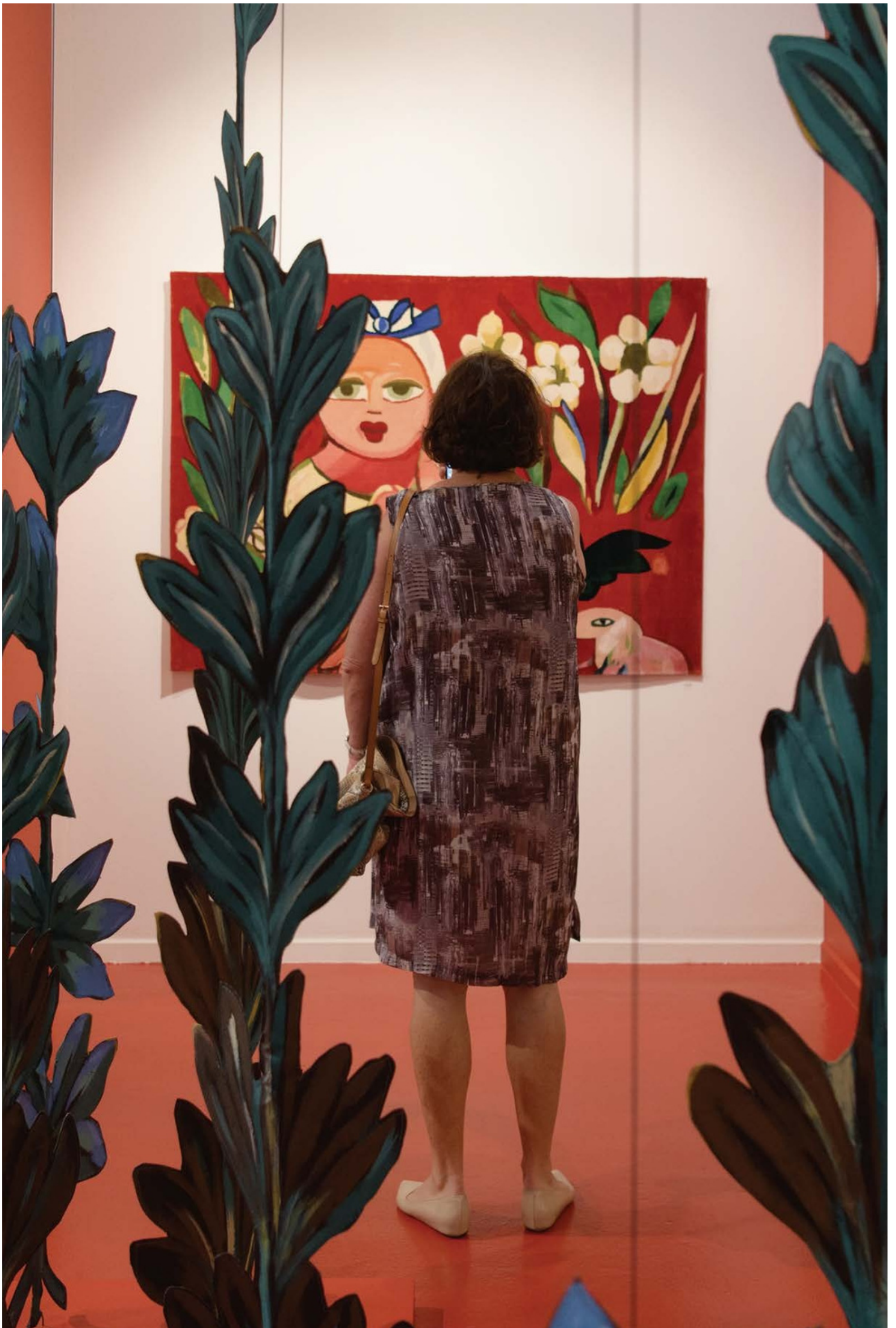
- Cultural awareness workshops
- School incursions for regional and hard-to-reach communities
- Programming for disadvantaged and isolated groups
- Multifaith & multicultural engagement opportunities—nationally and internationally
- Initiatives such as ‘Museum in a Box’

“I have always believed that it is a privilege to support the Jewish Museum of Australia.

Established as a community museum more than forty years ago and dedicated to the highest standards, it is a jewel in the crown of our community and stands tall among Jewish museums worldwide.

As we enter a new era, your support for the Museum will help to ensure that our special story can continue to be told.”

*Zelda Rosenbaum OAM
Honorary Life President*





קדימה
KADIMAH
Jewish Culture, Centre and National Library

JEWISH
MUSEUM of
AUSTRALIA
Sandra Centre of Justice

COHEN

Illuminate

Supporting the Jewish Museum for a New Era

With less than 10% of our funding derived from Government sources, we depend on the generosity of our committed supporters to keep our doors open and our programs and experiences alive.

Bringing visitors of all backgrounds and ages together to engage with the richness of Jewish culture, the Jewish Museum was established through the power of philanthropy and we exist today as a direct result of this grand altruistic tradition.

Under the banner of 'Illuminate', we are fundraising to ensure the enhancement of our offer into a new era and across our four key platforms of impact: onsite, offsite, online and outreach.

Most significantly, your support will enable immediate enrichment today, and major impact from day one at our upscaled new home.

Your involvement will empower us to:

- **Conserve, expand and make more accessible our permanent collection, extending and enriching our storytelling to reflect the rich diversity of being Jewish and being Australian;**
- **Refresh and refine our learning programs for the young and young-at-heart through single events and series that illuminate Jewish life and increase our social imprint;**
- **Hone and improve our visitor experiences to fully reflect our organisational values and calibre;**
- **Strengthen and diversify our digital capacities to enable meaningful access to the Jewish Museum from anywhere and at any time; and**
- **Consolidate our working and engagement processes to achieve best practice and cement the Jewish Museum as a global leader among our counterparts.**

“The Museum offers a wonderful opportunity to connect with stories. When we know each other’s stories, it leads to understanding and a better world. Thank you for the visit.”

Jewish Museum visitor
Love & Legacy exhibition



Illuminate

Ways to Give and Be Involved

General donations and major gifts to the Jewish Museum are recognised under the banner of Illuminate at different levels:

Supporter \$10,000–\$24,999
Major Supporter \$25,000–\$99,999
Principal Supporter \$100,000–\$249,999
Benefactor \$250,000–\$499,999
Major Benefactor \$500,000–\$999,999
Principal Benefactor \$1,000,000+

More specific support can also be tied to particular interests and impacts, using the same categories above and according to the our pillars of activity:

- Research & Interpretation
- Learning & Engagement
- Experiences & Events

Donor recognition includes acknowledgment in our Year in Review, on donor boards onsite and across digital channels, and as part of promotions for exhibitions and events. All donations are tax-deductible.

Lifetime Illuminators

Donors whose cumulative giving totals \$100,000+ are part of our 'Lifetime Illuminators' group and enjoy a range of attached benefits. These include invitations to exclusive previews and launch parties, an annual evening hosted by the Director & CEO and Board President, VIP tours of major exhibitions, and VIP seating at gala events.

The Lubofsky Society

The Lubofsky Society is the Museum's Bequest givers' group, named in honour of Rabbi Ronald Lubofsky who helped found the Jewish Museum and believed that bequest giving was central to the Museum's continued relevance and sustainability.

The Society meets regularly for intimate Jewish Museum gatherings or in the homes of lead bequestors.

Birthdays, Weddings, Milestones, Bar- & Bat-Mitzvahs

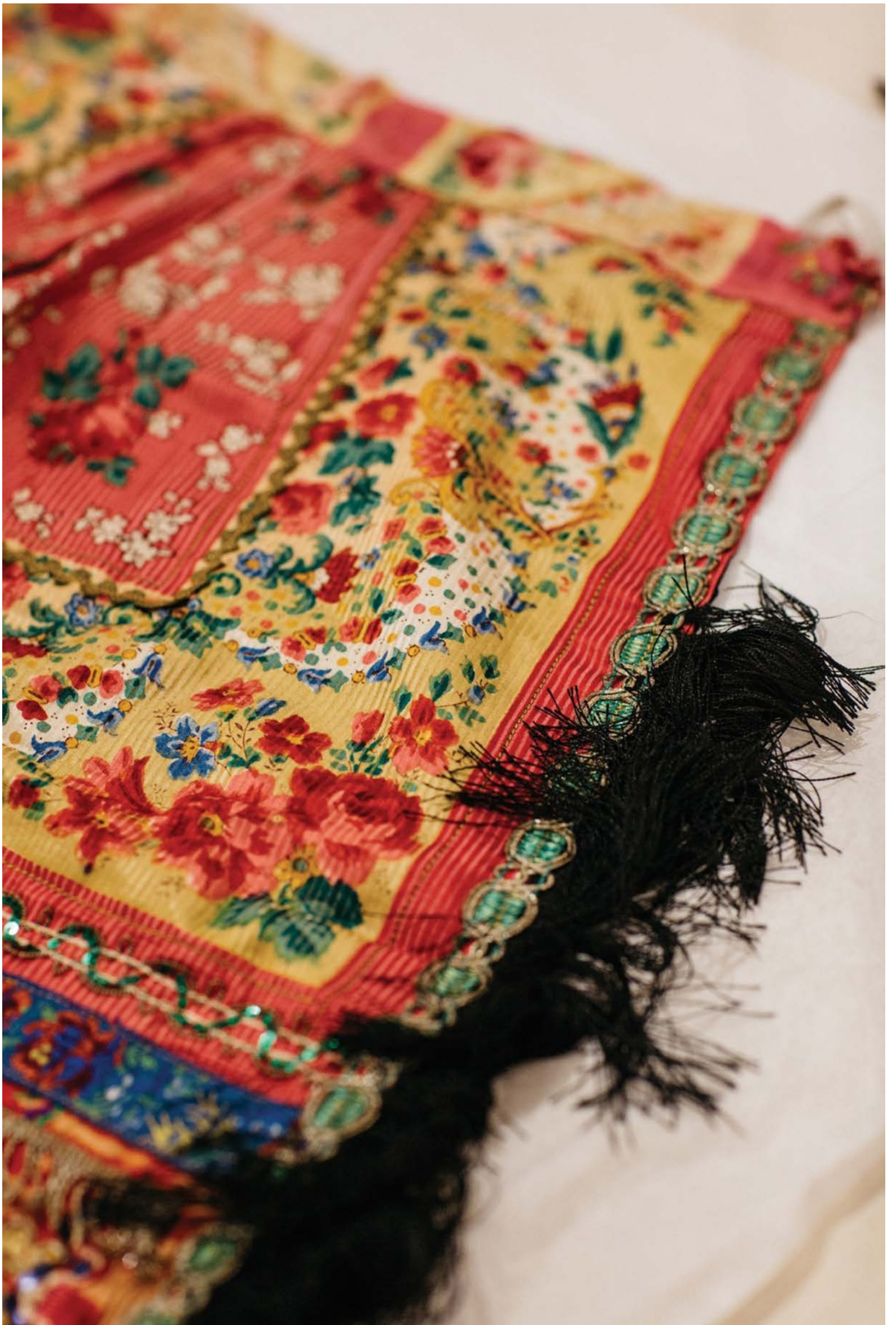
If you'd like to support the Jewish Museum by asking your guests to make a donation in honour of your milestone or celebration, we would be delighted to assist. The Museum can provide donation forms and envelopes and set-up an online giving circle or auction on your behalf. We'll undertake to have tax deductible receipts and thank you letters out to every donor within days of your event and will respect their privacy thereafter.

Corporate Partnerships

Uniquely positioned within both the Jewish community and arts and culture sector, the Museum offers brand alignment with considerable kudos, along with access to valuable networks. The Museum can work with you to tailor a mutually beneficial corporate partnership, including interactive and informal cultural awareness workshops, exclusive experiences and invitations to gala events.

“Thank you for inviting the wider community to visit this cultural treasure trove. I look forward to coming back and exploring the rest of the museum collection.”

Jewish Museum visitor



Find Out More

To find out more about giving to the Jewish Museum of Australia, please contact:

Board President, Gideon Kline:
gideonkline@jewishmuseum.com.au
+61 3 8534 6300
+61 408 502 532



© Jewish Museum of Australia 2022

Image credits Marie-Luise Skibbe (front cover, inner front cover, pages 02, 05, 10, 13, 14, 18, 22, 26, 28, 35, 36, 39, and inner back cover); Both Studio (page 09); Sarah Walker (pages 17 and 31), Mark Ashkanasy (page 25); and Artist impression, Jewish Arts Quarter, McIlldowie Partners (page 32).

“Our family takes pride in being involved over three generations with the Jewish Museum of Australia, and acknowledges the Museum’s empathy with the community, embodying history, education and entertainment.”

Dinah & Henry Krongold
Benefactors